



Seeknit
— Product List —

■ **A note about this product list**

Specifications, prices, designs, and other product details are subject to change without notice.

Thank you for your understanding.

Colors and specifications may appear differently from the actual product, due to photography and printing.

■ **A reminder when ordering**

When ordering, please be sure to specify the **Product Name**, **Number of Items**, and the **Product Number**.

Circular Needles 22 cm (9 inch)

| mm | US | No. | mm | US | No. | mm | US | No. |
|---------|--------|-------|---------|----------|-------|----------|------|-----|
| 2.00 mm | US 0 | 04965 | 4.00 mm | US 6 | 56762 | 9.00 mm | US13 | — |
| 2.25 mm | US 1 | 04966 | 4.50 mm | US 7 | 04970 | 10.00 mm | US15 | — |
| 2.50 mm | US 1.5 | 06834 | 5.00 mm | US 8 | 04225 | 11.00 mm | US16 | — |
| 2.75 mm | US 2 | 04967 | 5.50 mm | US 9 | 04226 | 12.00 mm | US17 | — |
| 3.00 mm | US 2.5 | — | 6.00 mm | US 10 | 04227 | 15.00 mm | US19 | — |
| 3.25 mm | US 3 | 04968 | 6.50 mm | US 10.5 | — | | | |
| 3.50 mm | US 4 | 04223 | 7.00 mm | US 10.75 | — | | | |
| 3.75 mm | US 5 | 04224 | 8.00 mm | US 11 | — | | | |

Contents

| | |
|----------------------------------|----|
| Circular Needles | 04 |
| Asymmetric Circular Needles | 09 |
| Single Pointed Needles | 10 |
| Double Pointed Needles | 14 |
| Crochet Hooks | 16 |
| Afghan/Tunisian Crochet Hooks | 18 |
| Interchangeable Circular Needles | 20 |
| Accessories | 24 |



Product Features



Shirotake

The surface finishing brings out the bamboo's natural color and fine texture. Shirotake shows off the goodness of nature that is different from Koshitsu.



Koshitsu

After going through KA's original high temperature and pressure treatment, Koshitsu is carefully polished with natural plant wax.



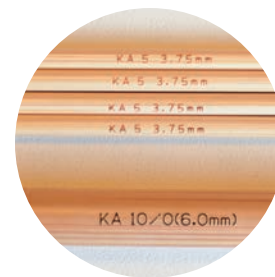
Point 01

The finely ground needle tips make it easier to pick up stitches.



Point 02

The carefully polished surface is soft to the touch and the yarn slides off easily.



Point 03

The size is laser-printed so it won't rub off.



Point 04

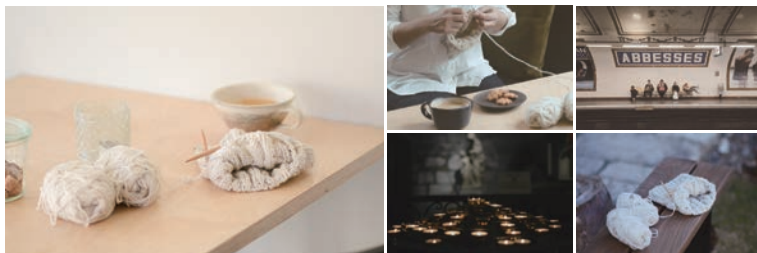
KA knitting needles use a rotating swivel cord to prevent the cord from twisting.



Point 05

The asymmetric circular needle is a KA original product developed to make knitting easier for small items such as socks. One of the needles is just one centimeter shorter than the other, and that makes a big difference in smoothness and comfort.

01 Circular Needles



Kinki Amibari original circular needles with swivel cord connectors make knitting smooth because the cord does not twist. KA circular needles are light and the cable is soft, so even long needles can be stored and carried easily. Use the magic loop or two circular needles at once to knit small creations, including socks, gloves, hats, cowls, and vests.

Shirotake



Circular Needles 22 cm (9 inch)

| mm | US | No. | mm | US | No. | mm | US | No. |
|---------|--------|-------|---------|----------|-------|----------|------|-----|
| 2.00 mm | US 0 | 04965 | 4.00 mm | US 6 | 56762 | 9.00 mm | US13 | — |
| 2.25 mm | US 1 | 04966 | 4.50 mm | US 7 | 04970 | 10.00 mm | US15 | — |
| 2.50 mm | US 1.5 | 06834 | 5.00 mm | US 8 | 04225 | 11.00 mm | US16 | — |
| 2.75 mm | US 2 | 04967 | 5.50 mm | US 9 | 04226 | 12.00 mm | US17 | — |
| 3.00 mm | US 2.5 | — | 6.00 mm | US 10 | 04227 | 15.00 mm | US19 | — |
| 3.25 mm | US 3 | 04968 | 6.50 mm | US 10.5 | — | | | |
| 3.50 mm | US 4 | 04223 | 7.00 mm | US 10.75 | — | | | |
| 3.75 mm | US 5 | 04224 | 8.00 mm | US 11 | — | | | |

Shirotake



Circular Needles 30 cm (12 inch)

| mm | US | No. | mm | US | No. | mm | US | No. |
|---------|--------|-------|---------|----------|-------|----------|------|-----|
| 2.00 mm | US 0 | 05495 | 4.00 mm | US 6 | 56763 | 9.00 mm | US13 | — |
| 2.25 mm | US 1 | 05496 | 4.50 mm | US 7 | 05502 | 10.00 mm | US15 | — |
| 2.50 mm | US 1.5 | 06255 | 5.00 mm | US 8 | 05503 | 11.00 mm | US16 | — |
| 2.75 mm | US 2 | 05497 | 5.50 mm | US 9 | 05504 | 12.00 mm | US17 | — |
| 3.00 mm | US 2.5 | 06256 | 6.00 mm | US 10 | 05505 | 15.00 mm | US19 | — |
| 3.25 mm | US 3 | 05498 | 6.50 mm | US 10.5 | — | | | |
| 3.50 mm | US 4 | 05499 | 7.00 mm | US 10.75 | — | | | |
| 3.75 mm | US 5 | 05500 | 8.00 mm | US 11 | — | | | |

Shirotake



Circular Needles 40 cm (16 inch)

| mm | US | No. | mm | US | No. | mm | US | No. |
|---------|--------|-------|---------|----------|-------|----------|------|-------|
| 2.00 mm | US 0 | 04281 | 4.00 mm | US 6 | 56764 | 9.00 mm | US13 | 04294 |
| 2.25 mm | US 1 | 04282 | 4.50 mm | US 7 | 04288 | 10.00 mm | US15 | 04295 |
| 2.50 mm | US 1.5 | 06258 | 5.00 mm | US 8 | 04289 | 11.00 mm | US16 | — |
| 2.75 mm | US 2 | 04283 | 5.50 mm | US 9 | 04290 | 12.00 mm | US17 | 04296 |
| 3.00 mm | US 2.5 | 06259 | 6.00 mm | US 10 | 04291 | 15.00 mm | US19 | — |
| 3.25 mm | US 3 | 04284 | 6.50 mm | US 10.5 | 04292 | | | |
| 3.50 mm | US 4 | 04285 | 7.00 mm | US 10.75 | 06261 | | | |
| 3.75 mm | US 5 | 04286 | 8.00 mm | US 11 | 04293 | | | |

Shirotake



Circular Needles 50 cm (20 inch)

| mm | US | No. | mm | US | No. | mm | US | No. |
|---------|--------|-------|---------|----------|-------|----------|------|-------|
| 2.00 mm | US 0 | 06721 | 4.00 mm | US 6 | 56765 | 9.00 mm | US13 | 06738 |
| 2.25 mm | US 1 | 06722 | 4.50 mm | US 7 | 06731 | 10.00 mm | US15 | 06739 |
| 2.50 mm | US 1.5 | 06723 | 5.00 mm | US 8 | 06732 | 11.00 mm | US16 | — |
| 2.75 mm | US 2 | 06724 | 5.50 mm | US 9 | 06733 | 12.00 mm | US17 | — |
| 3.00 mm | US 2.5 | 06725 | 6.00 mm | US 10 | 06734 | 15.00 mm | US19 | — |
| 3.25 mm | US 3 | 06726 | 6.50 mm | US 10.5 | 06735 | | | |
| 3.50 mm | US 4 | 06727 | 7.00 mm | US 10.75 | 06736 | | | |
| 3.75 mm | US 5 | 06728 | 8.00 mm | US 11 | 06737 | | | |

Shirotake



Circular Needles 60 cm (24 inch)

| mm | US | No. | mm | US | No. | mm | US | No. |
|---------|--------|-------|---------|----------|-------|----------|------|-------|
| 2.00 mm | US 0 | 04298 | 4.00 mm | US 6 | 56766 | 9.00 mm | US13 | 04311 |
| 2.25 mm | US 1 | 04299 | 4.50 mm | US 7 | 04305 | 10.00 mm | US15 | 04312 |
| 2.50 mm | US 1.5 | 06262 | 5.00 mm | US 8 | 04306 | 11.00 mm | US16 | — |
| 2.75 mm | US 2 | 04300 | 5.50 mm | US 9 | 04307 | 12.00 mm | US17 | 04313 |
| 3.00 mm | US 2.5 | 06263 | 6.00 mm | US 10 | 04308 | 15.00 mm | US19 | 04314 |
| 3.25 mm | US 3 | 04301 | 6.50 mm | US 10.5 | 04309 | | | |
| 3.50 mm | US 4 | 04302 | 7.00 mm | US 10.75 | 06265 | | | |
| 3.75 mm | US 5 | 04303 | 8.00 mm | US 11 | 04310 | | | |

Shirotake



Circular Needles 74 cm (29 inch)

| mm | US | No. | mm | US | No. | mm | US | No. |
|---------|--------|-------|---------|----------|-------|----------|------|-------|
| 2.00 mm | US 0 | 04315 | 4.00 mm | US 6 | 56767 | 9.00 mm | US13 | 04328 |
| 2.25 mm | US 1 | 04316 | 4.50 mm | US 7 | 04322 | 10.00 mm | US15 | 04329 |
| 2.50 mm | US 1.5 | 06835 | 5.00 mm | US 8 | 04323 | 11.00 mm | US16 | — |
| 2.75 mm | US 2 | 04317 | 5.50 mm | US 9 | 04324 | 12.00 mm | US17 | 04330 |
| 3.00 mm | US 2.5 | — | 6.00 mm | US 10 | 04325 | 15.00 mm | US19 | 04331 |
| 3.25 mm | US 3 | 04318 | 6.50 mm | US 10.5 | 04326 | | | |
| 3.50 mm | US 4 | 04319 | 7.00 mm | US 10.75 | — | | | |
| 3.75 mm | US 5 | 04320 | 8.00 mm | US 11 | 04327 | | | |

Shirotake



Circular Needles 80 cm (32 inch)

| mm | US | No. | mm | US | No. | mm | US | No. |
|---------|--------|-------|---------|----------|-------|----------|------|-------|
| 2.00 mm | US 0 | 06281 | 4.00 mm | US 6 | 56768 | 9.00 mm | US13 | 06298 |
| 2.25 mm | US 1 | 06282 | 4.50 mm | US 7 | 06291 | 10.00 mm | US15 | 06299 |
| 2.50 mm | US 1.5 | 06283 | 5.00 mm | US 8 | 06292 | 11.00 mm | US16 | 55973 |
| 2.75 mm | US 2 | 06284 | 5.50 mm | US 9 | 06293 | 12.00 mm | US17 | 06300 |
| 3.00 mm | US 2.5 | 06285 | 6.00 mm | US 10 | 06294 | 15.00 mm | US19 | 06301 |
| 3.25 mm | US 3 | 06286 | 6.50 mm | US 10.5 | 06295 | | | |
| 3.50 mm | US 4 | 06287 | 7.00 mm | US 10.75 | 06296 | | | |
| 3.75 mm | US 5 | 06288 | 8.00 mm | US 11 | 06297 | | | |

Shirotake



Circular Needles 91 cm (36 inch)

| mm | US | No. | mm | US | No. | mm | US | No. |
|---------|--------|-------|---------|----------|-------|----------|------|-------|
| 2.00 mm | US 0 | 04332 | 4.00 mm | US 6 | 56769 | 9.00 mm | US13 | 04345 |
| 2.25 mm | US 1 | 04333 | 4.50 mm | US 7 | 04339 | 10.00 mm | US15 | 04346 |
| 2.50 mm | US 1.5 | 06836 | 5.00 mm | US 8 | 04340 | 11.00 mm | US16 | — |
| 2.75 mm | US 2 | 04334 | 5.50 mm | US 9 | 04341 | 12.00 mm | US17 | 04347 |
| 3.00 mm | US 2.5 | — | 6.00 mm | US 10 | 04342 | 15.00 mm | US19 | 04348 |
| 3.25 mm | US 3 | 04335 | 6.50 mm | US 10.5 | 04343 | | | |
| 3.50 mm | US 4 | 04336 | 7.00 mm | US 10.75 | — | | | |
| 3.75 mm | US 5 | 04337 | 8.00 mm | US 11 | 04344 | | | |

Shirotake



Circular Needles 100 cm (40 inch)

| mm | US | No. | mm | US | No. | mm | US | No. |
|---------|--------|-------|---------|----------|-------|----------|------|-------|
| 2.00 mm | US 0 | 06302 | 4.00 mm | US 6 | 56770 | 9.00 mm | US13 | 06319 |
| 2.25 mm | US 1 | 06303 | 4.50 mm | US 7 | 06312 | 10.00 mm | US15 | 06320 |
| 2.50 mm | US 1.5 | 06304 | 5.00 mm | US 8 | 06313 | 11.00 mm | US16 | — |
| 2.75 mm | US 2 | 06305 | 5.50 mm | US 9 | 06314 | 12.00 mm | US17 | 06321 |
| 3.00 mm | US 2.5 | 06306 | 6.00 mm | US 10 | 06315 | 15.00 mm | US19 | 06322 |
| 3.25 mm | US 3 | 06307 | 6.50 mm | US 10.5 | 06316 | | | |
| 3.50 mm | US 4 | 06308 | 7.00 mm | US 10.75 | 06317 | | | |
| 3.75 mm | US 5 | 06309 | 8.00 mm | US 11 | 06318 | | | |

Shirotake



Circular Needles 140 cm (55 inch)

| mm | US | No. | mm | US | No. | mm | US | No. |
|---------|--------|-------|---------|----------|-------|----------|------|-------|
| 2.00 mm | US 0 | 06266 | 4.00 mm | US 6 | 56771 | 9.00 mm | US13 | 06190 |
| 2.25 mm | US 1 | 06267 | 4.50 mm | US 7 | 06205 | 10.00 mm | US15 | 06191 |
| 2.50 mm | US 1.5 | 06268 | 5.00 mm | US 8 | 06107 | 11.00 mm | US16 | — |
| 2.75 mm | US 2 | 06269 | 5.50 mm | US 9 | 02503 | 12.00 mm | US17 | 06192 |
| 3.00 mm | US 2.5 | 06270 | 6.00 mm | US 10 | 06108 | 15.00 mm | US19 | 06193 |
| 3.25 mm | US 3 | 06271 | 6.50 mm | US 10.5 | 06188 | | | |
| 3.50 mm | US 4 | 06272 | 7.00 mm | US 10.75 | 06277 | | | |
| 3.75 mm | US 5 | 06273 | 8.00 mm | US 11 | 06189 | | | |

02 Asymmetric Circular Needles

The asymmetric circular needle is a KA original product developed to make knitting easier for small items such as socks. One of the needles is just one centimeter shorter than the other, and that makes a big difference in smoothness and comfort.

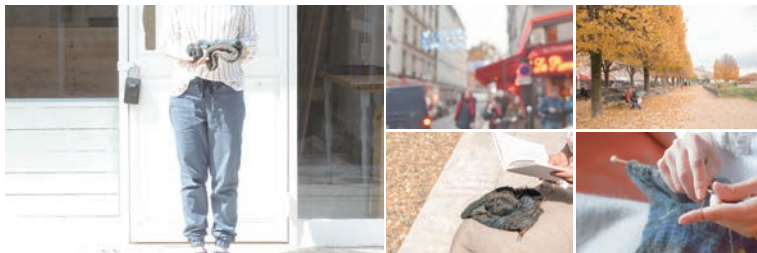
Shirotake



Asymmetric Circular Needles 23 cm (9.5 inch)

| mm | US | No. | mm | US | No. | mm | US | No. |
|---------|--------|-------|---------|----------|-------|----------|------|-----|
| 2.00 mm | US 0 | 06082 | 4.00 mm | US 6 | 56761 | 9.00 mm | US13 | — |
| 2.25 mm | US 1 | 06083 | 4.50 mm | US 7 | 06089 | 10.00 mm | US15 | — |
| 2.50 mm | US 1.5 | 06127 | 5.00 mm | US 8 | 06090 | 11.00 mm | US16 | — |
| 2.75 mm | US 2 | 06084 | 5.50 mm | US 9 | 06091 | 12.00 mm | US17 | — |
| 3.00 mm | US 2.5 | 06128 | 6.00 mm | US 10 | 06092 | 15.00 mm | US19 | — |
| 3.25 mm | US 3 | 06085 | 6.50 mm | US 10.5 | | | | |
| 3.50 mm | US 4 | 06086 | 7.00 mm | US 10.75 | | | | |
| 3.75 mm | US 5 | 06087 | 8.00 mm | US 11 | | | | |

03 Single Pointed Needles



KA's carefully finished lightweight single pointed needles are standard knitting needles, ideal for beginners who are just starting out. Use single pointed needles to knit sweaters, winter scarves, and cushion covers.

Shirotake



Single Pointed Needles with Blue Stopper 23 cm (9 inch)

| mm | US | No. | mm | US | No. | mm | US | No. |
|---------|--------|-------|---------|----------|-------|----------|------|-----|
| 2.00 mm | US 0 | — | 4.00 mm | US 6 | 56754 | 9.00 mm | US13 | — |
| 2.25 mm | US 1 | — | 4.50 mm | US 7 | 55799 | 10.00 mm | US15 | — |
| 2.50 mm | US 1.5 | — | 5.00 mm | US 8 | 55800 | 12.00 mm | US17 | — |
| 2.75 mm | US 2 | — | 5.50 mm | US 9 | 55801 | 15.00 mm | US19 | — |
| 3.00 mm | US 2.5 | — | 6.00 mm | US 10 | 55802 | 20.00 mm | US35 | — |
| 3.25 mm | US 3 | — | 6.50 mm | US 10.5 | 55803 | | | |
| 3.50 mm | US 4 | — | 7.00 mm | US 10.75 | — | | | |
| 3.75 mm | US 5 | 55797 | 8.00 mm | US 11 | — | | | |

Shirotake



Single Pointed Needles with Red Stopper 23 cm (9 inch)

| mm | US | No. | mm | US | No. | mm | US | No. |
|---------|--------|-------|---------|----------|-------|----------|------|-----|
| 2.00 mm | US 0 | — | 4.00 mm | US 6 | 56755 | 9.00 mm | US13 | — |
| 2.25 mm | US 1 | — | 4.50 mm | US 7 | 55806 | 10.00 mm | US15 | — |
| 2.50 mm | US 1.5 | — | 5.00 mm | US 8 | 55807 | 12.00 mm | US17 | — |
| 2.75 mm | US 2 | — | 5.50 mm | US 9 | 55808 | 15.00 mm | US19 | — |
| 3.00 mm | US 2.5 | — | 6.00 mm | US 10 | 55809 | 20.00 mm | US35 | — |
| 3.25 mm | US 3 | — | 6.50 mm | US 10.5 | 55810 | | | |
| 3.50 mm | US 4 | — | 7.00 mm | US 10.75 | — | | | |
| 3.75 mm | US 5 | 55804 | 8.00 mm | US 11 | — | | | |

Shirotake



Single Pointed Needles 23 cm (9 inch)

| mm | US | No. | mm | US | No. | mm | US | No. |
|---------|--------|-------|---------|----------|-------|----------|------|---------|
| 2.00 mm | US 0 | 04421 | 4.00 mm | US 6 | 56753 | 9.00 mm | US13 | 04439 |
| 2.25 mm | US 1 | 04422 | 4.50 mm | US 7 | 04431 | 10.00 mm | US15 | 04440 |
| 2.50 mm | US 1.5 | 04423 | 5.00 mm | US 8 | 04432 | 12.00 mm | US17 | 04441 |
| 2.75 mm | US 2 | 04424 | 5.50 mm | US 9 | 04433 | 15.00 mm | US19 | 04222 • |
| 3.00 mm | US 2.5 | 04425 | 6.00 mm | US 10 | 04434 | 20.00 mm | US35 | 04221 • |
| 3.25 mm | US 3 | 04426 | 6.50 mm | US 10.5 | 04435 | | | |
| 3.50 mm | US 4 | 04427 | 7.00 mm | US 10.75 | 04436 | | | |
| 3.75 mm | US 5 | 04428 | 8.00 mm | US 11 | 04438 | | | |

• Wood Needles

Shirotake



Single Pointed Needles 30 cm (12 inch)

| mm | US | No. | mm | US | No. | mm | US | No. |
|---------|--------|-------|---------|----------|-------|----------|------|---------|
| 2.00 mm | US 0 | 04379 | 4.00 mm | US 6 | 56756 | 9.00 mm | US13 | 04397 |
| 2.25 mm | US 1 | 04380 | 4.50 mm | US 7 | 04389 | 10.00 mm | US15 | 04398 |
| 2.50 mm | US 1.5 | 04381 | 5.00 mm | US 8 | 04390 | 12.00 mm | US17 | 04399 |
| 2.75 mm | US 2 | 04382 | 5.50 mm | US 9 | 04391 | 15.00 mm | US19 | 06417 • |
| 3.00 mm | US 2.5 | 04383 | 6.00 mm | US 10 | 04392 | 20.00 mm | US35 | — |
| 3.25 mm | US 3 | 04384 | 6.50 mm | US 10.5 | 04393 | | | |
| 3.50 mm | US 4 | 04385 | 7.00 mm | US 10.75 | 04394 | | | |
| 3.75 mm | US 5 | 04386 | 8.00 mm | US 11 | 04396 | | | |

• Wood Needles

Shirotake



Single Pointed Needles 35 cm (14 inch)

| mm | US | No. | mm | US | No. | mm | US | No. |
|---------|--------|-------|---------|----------|-------|----------|------|---------|
| 2.00 mm | US 0 | 04547 | 4.00 mm | US 6 | 56757 | 9.00 mm | US13 | 04565 |
| 2.25 mm | US 1 | 04548 | 4.50 mm | US 7 | 04557 | 10.00 mm | US15 | 04566 |
| 2.50 mm | US 1.5 | 04549 | 5.00 mm | US 8 | 04558 | 12.00 mm | US17 | 04567 |
| 2.75 mm | US 2 | 04550 | 5.50 mm | US 9 | 04559 | 15.00 mm | US19 | 04239 • |
| 3.00 mm | US 2.5 | 04551 | 6.00 mm | US 10 | 04560 | 20.00 mm | US35 | 04240 • |
| 3.25 mm | US 3 | 04552 | 6.50 mm | US 10.5 | 04561 | | | |
| 3.50 mm | US 4 | 04553 | 7.00 mm | US 10.75 | 04562 | | | |
| 3.75 mm | US 5 | 04554 | 8.00 mm | US 11 | 04564 | | | |

• Wood Needles

Shirotake



Flex Single Pointed Needles 50 cm (19.5 inch)

| mm | US | No. | mm | US | No. | mm | US | No. |
|---------|--------|-------|---------|----------|-------|----------|------|---------|
| 2.00 mm | US 0 | 06223 | 4.00 mm | US 6 | 56758 | 9.00 mm | US13 | 05443 |
| 2.25 mm | US 1 | 06224 | 4.50 mm | US 7 | 05438 | 10.00 mm | US15 | 05444 |
| 2.50 mm | US 1.5 | 06225 | 5.00 mm | US 8 | 05439 | 12.00 mm | US17 | 06229 |
| 2.75 mm | US 2 | 06226 | 5.50 mm | US 9 | 05440 | 15.00 mm | US19 | 06230 • |
| 3.00 mm | US 2.5 | 06227 | 6.00 mm | US 10 | 05441 | 20.00 mm | US35 | — |
| 3.25 mm | US 3 | 05434 | 6.50 mm | US 10.5 | 05465 | | | |
| 3.50 mm | US 4 | 05435 | 7.00 mm | US 10.75 | 06231 | | | |
| 3.75 mm | US 5 | 05436 | 8.00 mm | US 11 | 05442 | | | |

• Wood Needles

04 Double Pointed Needles



Double pointed needles that can make small circles are ideal for knitting small items. Attach a rubber cap to one end to use as a single pointed needle as well. Use double pointed needles to knit socks, gloves, and sleeves.

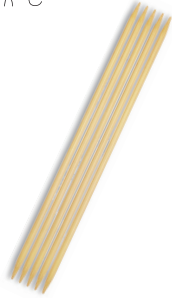
Shirotake



Double Pointed Needles 10 cm (4 inch) Set of 5

| mm | US | No. | mm | US | No. | mm | US | No. |
|---------|--------|-------|---------|----------|-----|----------|------|-----|
| 2.00 mm | US 0 | 05978 | 4.00 mm | US 6 | — | 9.00 mm | US13 | — |
| 2.25 mm | US 1 | 05979 | 4.50 mm | US 7 | — | 10.00 mm | US15 | — |
| 2.50 mm | US 1.5 | 06122 | 5.00 mm | US 8 | — | 12.00 mm | US17 | — |
| 2.75 mm | US 2 | 05490 | 5.50 mm | US 9 | — | 15.00 mm | US19 | — |
| 3.00 mm | US 2.5 | 06123 | 6.00 mm | US 10 | — | | | |
| 3.25 mm | US 3 | 05491 | 6.50 mm | US 10.5 | — | | | |
| 3.50 mm | US 4 | 05492 | 7.00 mm | US 10.75 | — | | | |
| 3.75 mm | US 5 | 05493 | 8.00 mm | US 11 | — | | | |

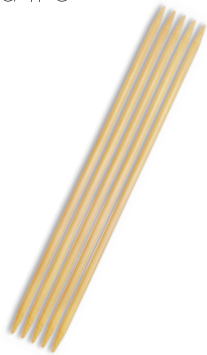
Shirotake



Double Pointed Needles 15 cm (6 inch) Set of 5

| mm | US | No. | mm | US | No. | mm | US | No. |
|---------|--------|-------|---------|----------|-------|----------|------|-----|
| 2.00 mm | US 0 | 04241 | 4.00 mm | US 6 | 56759 | 9.00 mm | US13 | — |
| 2.25 mm | US 1 | 04242 | 4.50 mm | US 7 | 04248 | 10.00 mm | US15 | — |
| 2.50 mm | US 1.5 | 06239 | 5.00 mm | US 8 | 04249 | 12.00 mm | US17 | — |
| 2.75 mm | US 2 | 04243 | 5.50 mm | US 9 | 05980 | 15.00 mm | US19 | — |
| 3.00 mm | US 2.5 | 06240 | 6.00 mm | US 10 | 05981 | | | |
| 3.25 mm | US 3 | 04244 | 6.50 mm | US 10.5 | 05982 | | | |
| 3.50 mm | US 4 | 04245 | 7.00 mm | US 10.75 | — | | | |
| 3.75 mm | US 5 | 04246 | 8.00 mm | US 11 | — | | | |

Shirotake

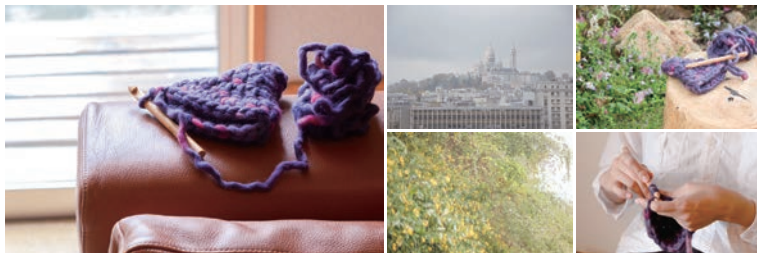


Double Pointed Needles 20 cm (8 inch) Set of 5

| mm | US | No. | mm | US | No. | mm | US | No. |
|---------|--------|-------|---------|----------|-------|----------|------|---------|
| 2.00 mm | US 0 | 04250 | 4.00 mm | US 6 | 56760 | 9.00 mm | US13 | 04263 |
| 2.25 mm | US 1 | 04251 | 4.50 mm | US 7 | 04257 | 10.00 mm | US15 | 04264 |
| 2.50 mm | US 1.5 | 06242 | 5.00 mm | US 8 | 04258 | 12.00 mm | US17 | 04265 |
| 2.75 mm | US 2 | 04252 | 5.50 mm | US 9 | 04259 | 15.00 mm | US19 | 04266 • |
| 3.00 mm | US 2.5 | 06243 | 6.00 mm | US 10 | 04260 | | | |
| 3.25 mm | US 3 | 04253 | 6.50 mm | US 10.5 | 04261 | | | |
| 3.50 mm | US 4 | 04254 | 7.00 mm | US 10.75 | 06245 | | | |
| 3.75 mm | US 5 | 04255 | 8.00 mm | US 11 | 04262 | | | |

• Wood Needles

05 Crochet Hooks



Crochet and Afghan hooks are perfectly formed and carefully polished to make it easier to hook the stitches and knit complex designs. Our crochet hooks with grips have grooves to make it easier to hold and to prevent slipping. The grips stabilize the tips to make knitting comfortable and less tiring on your hands. Crochet hooks come with an aluminum tip or a bamboo tip. Use crochet and Afghan hooks to knit hats, bags, blankets, and other creations.

Shirotake



Crochet Hooks 15 cm (6 inch)

| mm | US | No. | mm | US | No. | mm | US | No. |
|---------|-------|-------|---------|----------|-------|----------|------------|-------|
| 2.00 mm | — | 02449 | 4.00 mm | G / 6 | 02457 | 8.00 mm | L / 11 | 02466 |
| 2.25 mm | B / 1 | 02450 | 4.50 mm | 7 | 02459 | 9.00 mm | M / N / 13 | 02467 |
| 2.50 mm | — | 02451 | 5.00 mm | H / 8 | 02460 | 10.00 mm | N / P / 15 | 02468 |
| 2.75 mm | C / 2 | 02452 | 5.50 mm | I / 9 | 02461 | 12.00 mm | — | 02469 |
| 3.00 mm | — | 02453 | 6.00 mm | J / 10 | 02462 | | | |
| 3.25 mm | D / 3 | 02454 | 6.50 mm | K / 10.5 | 02463 | | | |
| 3.50 mm | E / 4 | 02455 | 7.00 mm | — | 02464 | | | |
| 3.75 mm | F / 5 | 02456 | 7.50 mm | — | 02465 | | | |

Koshitsu



Crochet Hooks with Bamboo Tip 13 cm (5 inch)

| mm | US | No. | mm | US | No. |
|---------|-------|-------|---------|--------|-------|
| 2.00 mm | — | 05180 | 4.00 mm | G / 6 | 05185 |
| 2.25 mm | B / 1 | 05181 | 4.50 mm | 7 | — |
| 2.50 mm | — | 05182 | 5.00 mm | H / 8 | 05186 |
| 2.75 mm | C / 2 | — | 5.50 mm | I / 9 | 05187 |
| 3.00 mm | — | 05183 | 6.00 mm | J / 10 | 05188 |
| 3.25 mm | D / 3 | — | | | |
| 3.50 mm | E / 4 | 05184 | | | |
| 3.75 mm | F / 5 | — | | | |

Koshitsu



Crochet Hooks with Aluminium Tip 13 cm (5 inch)

| mm | US | No. | mm | US | No. |
|---------|-------|-------|---------|--------|-------|
| 2.00 mm | — | 05915 | 4.00 mm | G / 6 | 05919 |
| 2.25 mm | B / 1 | 57263 | 4.50 mm | 7 | — |
| 2.50 mm | — | 05916 | 5.00 mm | H / 8 | 05920 |
| 2.75 mm | C / 2 | — | 5.50 mm | I / 9 | — |
| 3.00 mm | — | 05917 | 6.00 mm | J / 10 | 05921 |
| 3.25 mm | D / 3 | — | | | |
| 3.50 mm | E / 4 | 05918 | | | |
| 3.75 mm | F / 5 | — | | | |

Shirotake



Flex Afghan Crochet Hooks 50 cm (19.5 inch)

| mm | US | No. | mm | US | No. | mm | US | No. |
|---------|-------|-------|---------|----------|-------|----------|------------|-------|
| 2.00 mm | — | 05643 | 4.00 mm | G / 6 | 05651 | 8.00 mm | L / 11 | 05659 |
| 2.25 mm | B / 1 | — | 4.50 mm | 7 | 05653 | 9.00 mm | M / N / 13 | 05660 |
| 2.50 mm | — | 05645 | 5.00 mm | H / 8 | 05654 | 10.00 mm | N / P / 15 | 05661 |
| 2.75 mm | C / 2 | 05646 | 5.50 mm | I / 9 | 05655 | 12.00 mm | — | — |
| 3.00 mm | — | 05647 | 6.00 mm | J / 10 | 05656 | | | |
| 3.25 mm | D / 3 | 05648 | 6.50 mm | K / 10.5 | 05657 | | | |
| 3.50 mm | E / 4 | 05649 | 7.00 mm | — | 05658 | | | |
| 3.75 mm | F / 5 | 05650 | 7.50 mm | — | — | | | |

Shirotake

Locker Hooking Needles 12 cm (5 inch)



| mm | US | No. |
|---------|-----|-------|
| 4.00 mm | G/6 | 05494 |

06 Afghan/Tunisian Crochet Hooks

Shirotake



Tunisian Double Ended Crochet Hooks 10 cm (4 inch)

| mm | US | No. | mm | US | No. |
|---------|-----|-------|---------|--------|-------|
| 2.00 mm | — | — | 4.00 mm | G/6 | 55993 |
| 2.25 mm | B/1 | — | 4.50 mm | 7 | — |
| 2.50 mm | — | — | 5.00 mm | H/8 | 55794 |
| 2.75 mm | C/2 | — | 5.50 mm | I/9 | 55795 |
| 3.00 mm | — | — | 6.00 mm | J/10 | 55796 |
| 3.25 mm | D/3 | — | 6.50 mm | K/10.5 | — |
| 3.50 mm | E/4 | 55791 | 7.00 mm | — | 55879 |
| 3.75 mm | F/5 | 55792 | | | |

Shirotake



Tunisian Double Ended Crochet Hooks 15 cm (6 inch)

| mm | US | No. | mm | US | No. |
|---------|-----|-------|---------|--------|-------|
| 2.00 mm | — | — | 4.00 mm | G/6 | 06420 |
| 2.25 mm | B/1 | — | 4.50 mm | 7 | — |
| 2.50 mm | — | — | 5.00 mm | H/8 | 06422 |
| 2.75 mm | C/2 | — | 5.50 mm | I/9 | 06423 |
| 3.00 mm | — | — | 6.00 mm | J/10 | 06424 |
| 3.25 mm | D/3 | — | 6.50 mm | K/10.5 | — |
| 3.50 mm | E/4 | 06418 | 7.00 mm | — | — |
| 3.75 mm | F/5 | 06419 | | | |

Shirotake



Afghan Double Ended Crochet Hooks 30 cm (12 inch)

| mm | US | No. | mm | US | No. | mm | US | No. |
|---------|-------|-------|---------|----------|-------|----------|------------|-------|
| 2.00 mm | — | 05075 | 4.00 mm | G / 6 | 05083 | 8.00 mm | L / 11 | 05130 |
| 2.25 mm | B / 1 | — | 4.50 mm | 7 | 05085 | 9.00 mm | M / N / 13 | 05131 |
| 2.50 mm | — | 05077 | 5.00 mm | H / 8 | 05086 | 10.00 mm | N / P / 15 | 05132 |
| 2.75 mm | C / 2 | 05078 | 5.50 mm | I / 9 | 05087 | 12.00 mm | — | 06125 |
| 3.00 mm | — | 05079 | 6.00 mm | J / 10 | 05088 | | | |
| 3.25 mm | D / 3 | 05080 | 6.50 mm | K / 10.5 | 05129 | | | |
| 3.50 mm | E / 4 | 05081 | 7.00 mm | — | 06124 | | | |
| 3.75 mm | F / 5 | 05082 | 7.50 mm | — | 06235 | | | |

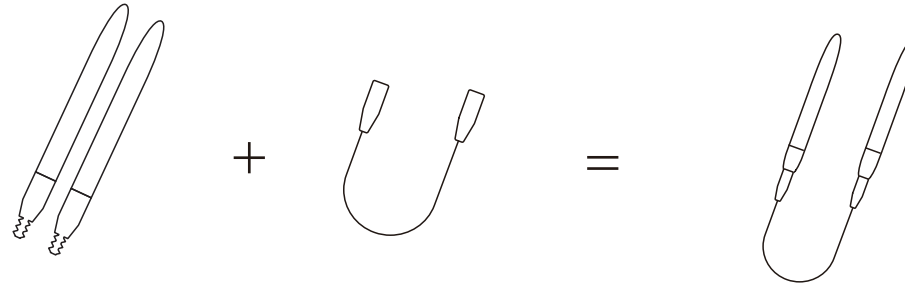
Shirotake



Afghan Single Ended Crochet Hooks 35 cm (14 inch)

| mm | US | No. | mm | US | No. | mm | US | No. |
|---------|-------|-------|---------|----------|-------|----------|------------|-------|
| 2.00 mm | — | 05124 | 4.00 mm | G / 6 | 05127 | 8.00 mm | L / 11 | 04238 |
| 2.25 mm | B / 1 | — | 4.50 mm | 7 | 05128 | 9.00 mm | M / N / 13 | 01058 |
| 2.50 mm | — | 04228 | 5.00 mm | H / 8 | 04234 | 10.00 mm | N / P / 15 | 04349 |
| 2.75 mm | C / 2 | 04229 | 5.50 mm | I / 9 | 04235 | 12.00 mm | — | 06280 |
| 3.00 mm | — | 05126 | 6.00 mm | J / 10 | 04236 | | | |
| 3.25 mm | D / 3 | 04230 | 6.50 mm | K / 10.5 | 04237 | | | |
| 3.50 mm | E / 4 | 04231 | 7.00 mm | — | 06278 | | | |
| 3.75 mm | F / 5 | 04232 | 7.50 mm | — | 06279 | | | |

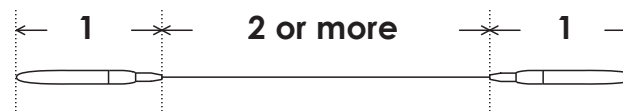
07 Interchangeable Circular Needles



■ What are interchangeable circular needles?

Interchangeable circular needles are products that allow you to mix and match cord joints, joint converters, stoppers and other parts or to customize circular needle sizes and shapes as you like.

■ What to be careful of when selecting interchangeable circular needles.



If the total length of the needle tips exceeds the length of the cord, you will not be able to use them as circular needles.

■ Combine the parts.

You can extend cord lengths with Cord Joints, connect needles and cords of different screw diameters by using Joint Converters, or attach Stoppers to the end of cords to make single point needles.

M 1.8 Series

Shirotake



Interchangeable Circular Needle Pair Tips M1.8

| 5 cm / 2 inch | | | 10cm / 4 inch | | | 12.5 cm / 5 inch | | | 14 cm / 5.5 inch | | |
|---------------|-------|-------|---------------|-------|-------|------------------|-------|-------|------------------|-------|-------|
| mm | US | No. | mm | US | No. | mm | US | No. | mm | US | No. |
| 2.00 mm | US0 | 06959 | 2.00 mm | US0 | 06965 | 2.00 mm | US0 | 06971 | 2.00 mm | US0 | 06977 |
| 2.25 mm | US1 | 06960 | 2.25 mm | US1 | 06966 | 2.25 mm | US1 | 06972 | 2.25 mm | US1 | 06978 |
| 2.50 mm | US1.5 | 06961 | 2.50 mm | US1.5 | 06967 | 2.50 mm | US1.5 | 06973 | 2.50 mm | US1.5 | 06979 |
| 2.75 mm | US2 | 06962 | 2.75 mm | US2 | 06968 | 2.75 mm | US2 | 06974 | 2.75 mm | US2 | 06980 |
| 3.00 mm | US2.5 | 06963 | 3.00 mm | US2.5 | 06969 | 3.00 mm | US2.5 | 06975 | 3.00 mm | US2.5 | 06981 |
| 3.25 mm | US3 | 06964 | 3.25 mm | US3 | 06970 | 3.25 mm | US3 | 06976 | 3.25 mm | US3 | 06982 |

Shirotake



Interchangeable Crochet Hook Tips M1.8

| 14 cm / 5.5 inch | | |
|------------------|-------|-------|
| mm | US | No. |
| 2.00 mm | — | 06921 |
| 2.25 mm | B / 1 | 06922 |
| 2.50 mm | — | 06923 |
| 2.75 mm | C / 2 | 06924 |
| 3.00 mm | — | 06925 |
| 3.25 mm | D / 3 | 06926 |

Cords M1.8

| Size (cm) | Size (inch) | No. |
|-----------|-------------|-------|
| 13 cm | 5 inch | 06946 |
| 20 cm | 8 inch | 06947 |
| 25 cm | 10 inch | — |
| 30 cm | 12 inch | 06949 |
| 35 cm | 14 inch | 57174 |
| 40 cm | 16 inch | 06951 |
| 55 cm | 22 inch | 57175 |
| 75 cm | 29.5 inch | 57176 |
| 95 cm | 37.5 inch | 57177 |
| 125 cm | 50 inch | 57178 |



07021 Cord Joint M1.8



07020 Stopper M1.8

M 2 Series

Shirotake



Interchangeable Circular Needle Pair Tips M2

5 cm / 2 inch

10 cm / 4 inch

12.5 cm / 5 inch

14 cm / 5.5 inch

| mm | US | No. | mm | US | No. | mm | US | No. | mm | US | No. |
|---------|-----|-------|---------|-----|-------|---------|-----|-------|---------|-----|-------|
| 3.50 mm | US4 | 06472 | 3.50 mm | US4 | 06160 | 3.50 mm | US4 | 06344 | 3.50 mm | US4 | 06551 |
| 3.75 mm | US5 | 06473 | 3.75 mm | US5 | 05864 | 3.75 mm | US5 | 06345 | 3.75 mm | US5 | 06552 |
| 4.00 mm | US6 | 56772 | 4.00 mm | US6 | 56773 | 4.00 mm | US6 | 56774 | 4.00 mm | US6 | 56775 |
| 4.50 mm | US7 | 06476 | 4.50 mm | US7 | 05866 | 4.50 mm | US7 | 06348 | 4.50 mm | US7 | 06555 |
| 5.00 mm | US8 | 06477 | 5.00 mm | US8 | 05867 | 5.00 mm | US8 | 06349 | 5.00 mm | US8 | 06556 |

Shirotake



Interchangeable Crochet Hook Tips M2

14 cm / 5.5 inch

| mm | US | No. |
|---------|-----|-------|
| 3.50 mm | E/4 | 06927 |
| 3.75 mm | F/5 | 06928 |
| 4.00 mm | G/6 | 06929 |
| 4.50 mm | 7 | 06931 |
| 5.00 mm | H/8 | 06932 |

Cords M2

| Size (cm) | Size (inch) | No. |
|-----------|-------------|-------|
| 13 cm | 5 inch | 06500 |
| 20 cm | 8 inch | 05854 |
| 25 cm | 10 inch | — |
| 30 cm | 12 inch | 06145 |
| 35 cm | 14 inch | 06502 |
| 40 cm | 16 inch | 05855 |
| 55 cm | 22 inch | 06503 |
| 75 cm | 29.5 inch | 06504 |
| 95 cm | 37.5 inch | 06350 |
| 125 cm | 50 inch | 57179 |



06511 Cord Joint M2



07022 Converter M2 → M1.8



05862 Stopper M2

M 4 Series

Shirotake



Interchangeable Circular Needle Pair Tips M4

| 5 cm / 2 inch | | | 10 cm / 4 inch | | | 12.5 cm / 5 inch | | | 14 cm / 5.5 inch | | |
|---------------|---------|-------|----------------|---------|-------|------------------|---------|-------|------------------|---------|-------|
| mm | US | No. | mm | US | No. | mm | US | No. | mm | US | No. |
| 5.50 mm | US9 | 56217 | 5.50 mm | US9 | 05868 | 5.50 mm | US9 | 06161 | 5.50 mm | US9 | 06557 |
| 6.00 mm | US10 | 56218 | 6.00 mm | US10 | 05869 | 6.00 mm | US10 | 06162 | 6.00 mm | US10 | 06558 |
| 6.50 mm | US10.5 | — | 6.50 mm | US10.5 | 05870 | 6.50 mm | US10.5 | 06186 | 6.50 mm | US10.5 | 06559 |
| 7.00 mm | US10.75 | — | 7.00 mm | US10.75 | — | 7.00 mm | US10.75 | 06163 | 7.00 mm | US10.75 | 06340 |
| 8.00 mm | US11 | — | 8.00 mm | US11 | — | 8.00 mm | US11 | 05871 | 8.00 mm | US11 | 06341 |
| 9.00 mm | US13 | — | 9.00 mm | US13 | — | 9.00 mm | US13 | 05872 | 9.00 mm | US13 | 06342 |
| 10.00 mm | US15 | — | 10.00 mm | US15 | — | 10.00 mm | US15 | 05873 | 10.00 mm | US15 | 06343 |

Shirotake



Interchangeable Crochet Hook Tips M4

| 14 cm / 5.5 inch | | |
|------------------|--------|-------|
| mm | US | No. |
| 5.50 mm | I/9 | 06933 |
| 6.00 mm | J/10 | 06934 |
| 6.50 mm | K/10.5 | 06935 |
| 7.00 mm | — | 06936 |
| 8.00 mm | L/11 | 06937 |
| 9.00 mm | M/N/13 | 06938 |
| 10.00 mm | N/P/15 | 06939 |

Cords M4

| Size (cm) | Size (inch) | No. |
|-----------|-------------|-------|
| 13 cm | 5 inch | — |
| 20 cm | 8 inch | — |
| 25 cm | 10 inch | 57015 |
| 30 cm | 12 inch | 56220 |
| 35 cm | 14 inch | 06151 |
| 40 cm | 16 inch | 05858 |
| 55 cm | 22 inch | 57180 |
| 75 cm | 29.5 inch | 06148 |
| 95 cm | 37.5 inch | 06149 |
| 125 cm | 50 inch | 57181 |



06512 Cord Joint M4



06514 Converter M4 → M2



05863 Stopper M4

08 Accessories



Set of 3

05117 Koshitsu Bamboo Cable-Stitch Holders



Set of 3

06198 Shirotake Grooved Cable-Stitch Holders



Set of 3

05116 Shirotake Bamboo Blunt Needles



Set of 10, 65 mm

02895 Shirotake Bamboo Marking Pins



02881 Memoric Stitch Markers



02879 Memoric Split Markers



Set of 30, Stitch Markers L5 / M5 / S5, Split Markers L5 / M5 / S5

02880 Memoric Markers Set



Set of 20, Black Thic5 / Thin5 White Thic5 / Thin5

06219 Memoric Lock Markers Black / White



Set of 20, Yellow Thic5 / Thin5 Blue Thic5 / Thin5

06220 Memoric Lock Markers Yellow / Blue



Set of 4, 2.00 mm - 4.00 mm

02874 Rubber Point Protectors Size S



Set of 4, 3.50 mm - 5.50 mm

02875 Rubber Point Protectors Size M



Set of 4, 4.00 mm - 6.50 mm

02876 Rubber Point Protectors Size L



Set of 4, 7.00 mm - 12 mm

02865 Rubber Point Protectors Twin Size XL



Set of 3, 2.00 mm - 6.50 mm

06432 Rubber Point Protectors For Circular Needle



13 cm

02899 Metal Stitch Holder



13 cm

05114 Metal Stitch Holders Set of 2



Set of 2, 20 cm / 16 cm

02889 Aluminum Stitch Holders Size L



Set of 2, 13 cm / 7 cm

56544 Aluminum Stitch Holders Gold



Set of 2, 13.5 cm

57031 Stainless Stitch Holders Long Black



Set of 2, 13.5 cm

57032 Stainless Stitch Holders Long Ivory



Set of 2, 13.5 cm

57033 Stainless Stitch Holders Long Orange



Set of 2, 8.5 cm

57074 Stainless Stitch Holders Short Black



Set of 2, 8.5 cm

57075 Stainless Stitch Holders Short Ivory



Set of 2, 8.5 cm

57076 Stainless Stitch Holders Short Orange



Set of 3, 100 mm / 110 mm / 120 mm

02873 Cable Stitch Holders



Set of 2, 72 mm

06434 Cable Stitch Holders V-type



70 mm / 55 mm / 46 mm

02902 Yarn Darning Needles Set of 3



55 mm x 2 / 49 mm / 46 mm x 2 / 40 mm

02903 Yarn Darning Needles Set of 6



70 mm / 65 mm / 60 mm

02872 Yarn Darning Needles Thick



94 mm / 82 mm / 70 mm

02868 Yarn Darning Needles Plastic Set of 3



Set of 10, 68 mm

05452 Knitting Marking Pins Assortment Long



Set of 10, 65 mm

05463 Knitting Marking Pins Assortment



Set of 10, 65 mm

05453 Knitting Marking Pins Black



Set of 10, 68 mm

05454 Knitting Marking Pins Long Pearl



Set of 2

56599 Yarn Threaders



Set of 5, 9 cm x 4.3 cm

06202 Yarn Bobbins



02861 Yarn Leader Thin



02862 Yarn Leader Thick

Conversion chart included



56540 Wrap Per Inch Tool Chain



06435 Needle Coil Binders Violet



06592 Needle Coil Binders Green



02905 Knitting Counter With Locking Function



02906 Knitting Counter for 2.00 mm - 6.50 mm



06427 Tape Measure with Magnet White Flower



06428 Tape Measure with Magnet Black Flower

Tape Measure 1.5 m / 60", (cm and inch)



06098 Red



06103 Pink



06102 Orange



06101 Green



06100 Yellow



06099 Blue

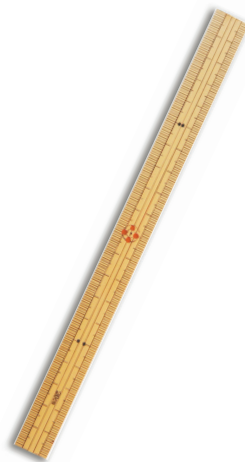


Set of 6

06206 Tape Measure Assortment



03082 Bamboo Ruler 10 cm



03093 Bamboo Ruler 20 cm



04352 Accessories Set

- Set -
- Rubber Point Protectors (M)
- Yarn Darling Needles (3)
- Memoric Markers (20)
- Cable Stitch Holders (3)
- Aluminium Stitch Holders (3)
- Bamboo Ruler (20cm)



9 cm

02890 Embroidery Scissors



8 cm

02892 Sewing Scissors



9 cm

06426 Stork Scissors

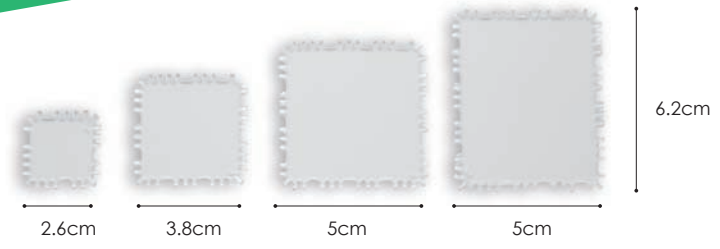
Needle and instructions included



11 cm

56084 SQUARE Weaving Loom

Instructions included



56281 SQUARE Mini Weaving Loom 4 sizes

Instructions included



56556 Cord Maker Plate Set

Instructions included



56555 Mini Sock Blocker Plate Set



Set of 4, 2.4mm x 2, 3mm x 2

56088 Charm Set



6.5cm

02893 Shirotake Mini Single Pointed Bamboo Needles



7 cm

02894 Shirotake Mini Bamboo Crochet Hook



6 cm

56089 Bamboo Crochet Hook Key Chain
56090 Bamboo Crochet Hook Strap



近畿編針株式会社

〒630-0101 奈良県生駒市高山町 4368 番地

T: 0743-78-1108/F: 0743-79-0882

✉: office@amibari.jp

<http://www.amibari.jp>

Kinki Amibari Co. Ltd.

4368 Takayama-cho, Ikoma, Nara, Japan 630-0101

T: +81-(0)743-78-1108/F: +81-(0)743-79-0882

✉: office-en@amibari.jp

<http://www.amibari.jp/english>